

Wang Daeng Industrial Supplies Co.,Ltd.

116/98 Moo3 T.Bowin, A.Sriracha. Chonburi 20230

Tel: (038) 337 838-9 Mobile: (081) 564-8315

www.wangdex.com awirut@wangdex.co.th



# D3IL10

The ideal dosing pump  
to ensure perfect mixing  
of your cutting oils

D3IL10V S/N 18429669

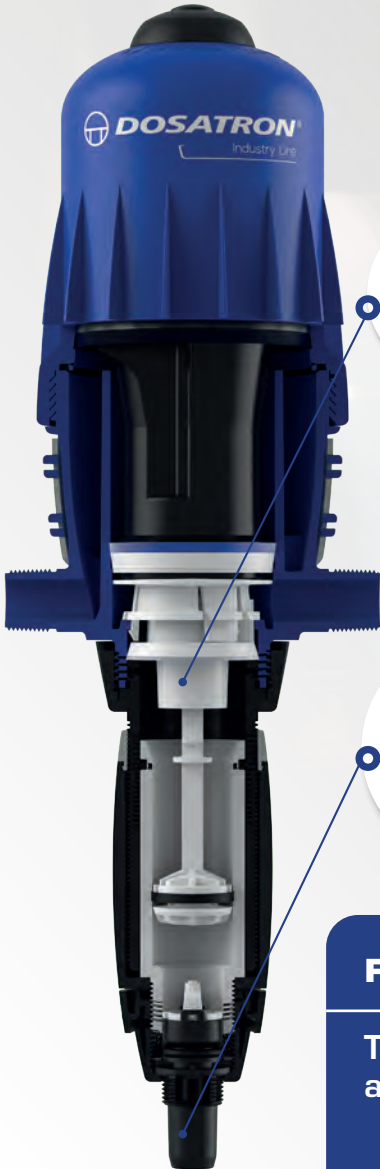
Controlled by microprocessor - Operating time 10 sec. max. 70  
Change program - Maximum cycle 1 sec. to 2 min. to 9999  
Speed adjustment - Operating pressure 0.1 - 200 bar  
Pressure measurement - Operating pressure 0.5 - 4 bar  
Temperature measurement - Max. temperature 400°C  
CE



**DOSATRON®**

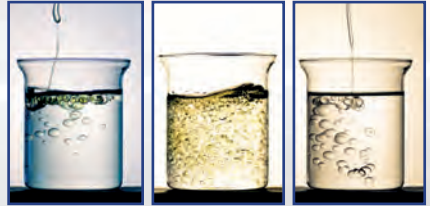
*Because life is powered by water®*

Integrated into the water circuit, the Dosatron pump uses the pressure and flow of the water as its sole source of power. Driven in this manner, the Dosatron can dose various types of additives directly into the water supply tanks of one or several conventional or CNC machines. The precision and reliability of the Dosatron pump eliminates any risk of errors in the dosing and preparation of products such as mixtures and solutions. It is not affected by the inherent variations of a fluid (pressure, flow rate, temperature, inlet height and viscosity). Constant attention to quality at all stages of the dosing pump's manufacture, both in terms of the materials used and the testing and inspection procedures applied, ensures an optimum response to the needs of metalworking machine tool users.



#### **Emulsifying capacity:**

The D3IL10VVF and D3IL10VF provide improved emulsion thanks to the emulsifying washer.



#### **Hose length:**

the 2.75m suction hose allows you to work with all types of containers (drums, IBCs, etc.).

#### **Hose diameter:**

the optional viscous kit absorbs viscosity variations due to temperature.

## **FULLY VF SEALS**

The Viton seals on the piston and dosing assembly are resistant to all types of oils.



## THE ADVANTAGES OF DOSATRON

Maximises cutting oil efficiency.




Reliable and consistent dosing.

Optimises water and chemical consumption

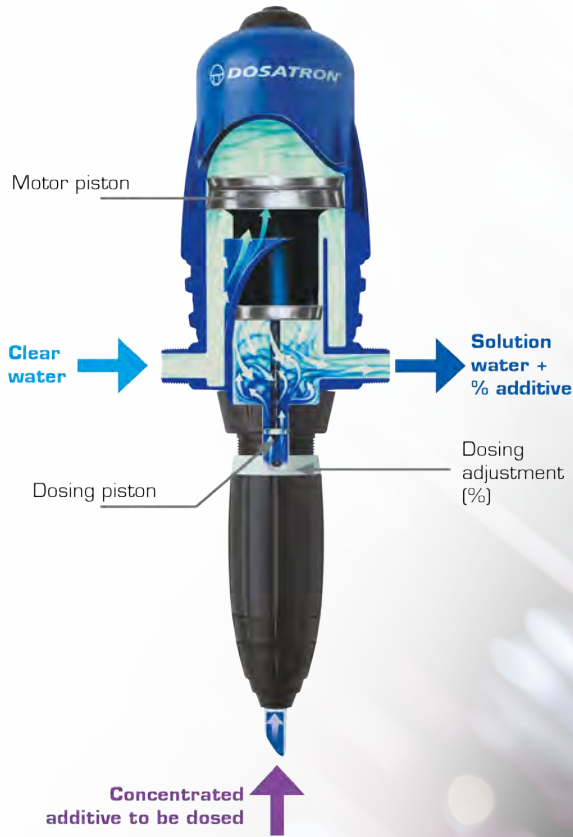
Extremely easy to use - plug & play.

Can be used with all types of cutting oil containers (IBCs, 200 litre drums, etc.).

## Technical specifications

	<b>D3IL10VF - D3IL10VVF</b>
Operating flow range min/max	10 l/h min - 3m <sup>3</sup> /h max [1/3 US Pint/min (min.) - 14 US gpm (max.)]
Max operating temperature	<b>40°C / 104°F</b>
Operating water pressure min/max	0.5 - 6 bar [7 - 85 psi]
dosing percentage min/max	1% to 10% 1:100 - 1:10
Version de série Version en option	  Integrated By-Pass  Viscous kit
Connection	3/4" Male BSP/NPT - Ø20x27 mm

# DOSATRON technology



Wang Daeng Industrial Supplies Co.,Ltd.

116/98 Moo3 T.Bowin, A.Sriracha. Chonburi 20230

Tel: (038) 337 838-9 Mobile: (081) 564-8315

[www.wangdex.com](http://www.wangdex.com)

[awirut@wangdex.co.th](mailto:awirut@wangdex.co.th)

**DOSATRON APP**  
The daily assistant



**DOSATRON INTERNATIONAL S.A.S**

Rue Pascal - BP 6 - 33370 TRESSES (Bordeaux) - FRANCE  
Tel. 33 (0)5 57 97 11 11 - Fax. 33 (0)5 57 97 11 29 / 33 (0)5 57 97 10 85  
[info@dosatron.com](mailto:info@dosatron.com) - [www.dosatron.com](http://www.dosatron.com)

